

2024 SIMP Locations MQ24-101

LEGEND

Parcels_Infra_Replace_Explore
TYPE

- (REPLACE SAN LAT)
- (REPLACE SAN LAT) (WATER LAT UNKNOWN)
- (REPLACE WATER AND SAN LAT)
- (REPLACE WATER LAT)
- (REPLACE WATER LAT) (SAN LAT UNKNOWN)
- (SAN LAT UNKNOWN)
- (SAN LAT UNKNOWN) (WATER LAT UNKNOWN)

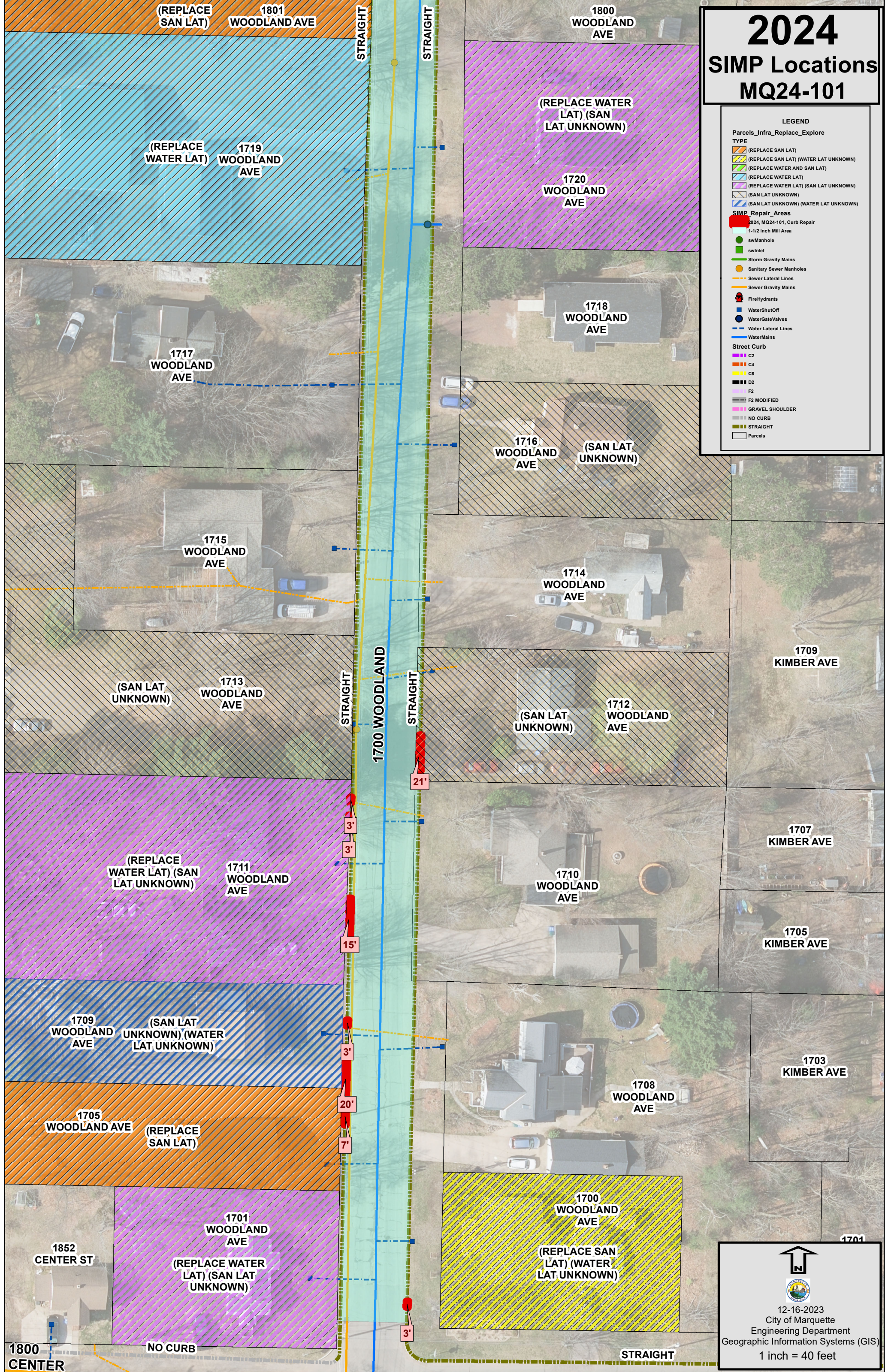
SIMP_Repair_Areas



- 2024, MQ24-101, Curb Repair
- 1-1/2 Inch Mill Area

- swManhole
- swInlet
- Storm Gravity Mains
- Sanitary Sewer Manholes
- Sewer Lateral Lines
- Sewer Gravity Mains
- FireHydrants
- WaterShutOff
- WaterGateValves
- Water Lateral Lines
- WaterMains

Street Curb

- C2
- C4
- C6
- D2
- F2
- F2 MODIFIED
- GRAVEL SHOULDER
- NO CURB
- STRAIGHT
- Parcels





 12-16-2023
 City of Marquette
 Engineering Department
 Geographic Information Systems (GIS)
 1 inch = 40 feet