

1800 WRIGHT

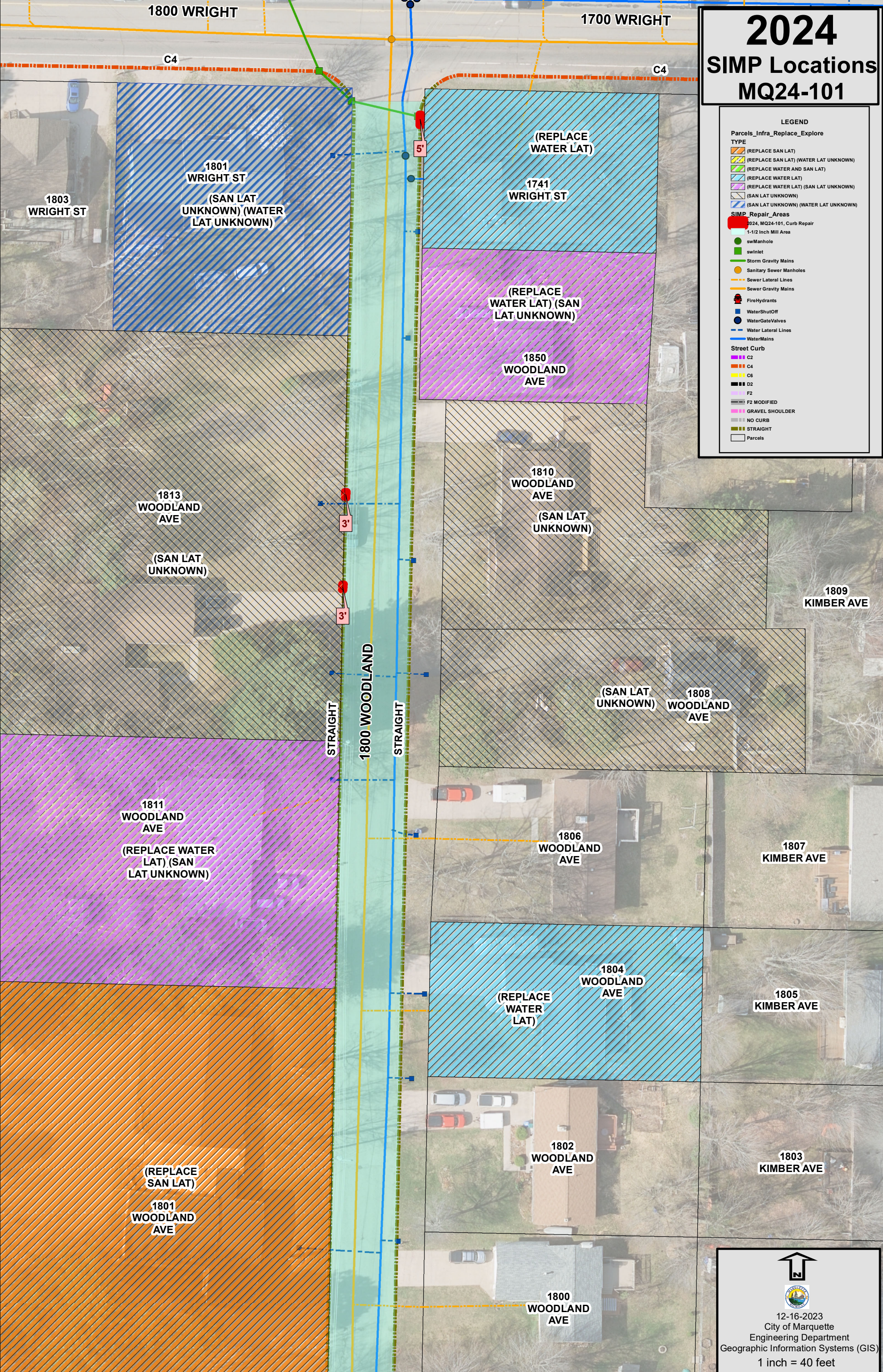
1700 WRIGHT



# 2024 SIMP Locations MQ24-101

### LEGEND

- Parcels\_Infra\_Replace\_Explore  
TYPE
- (REPLACE SAN LAT)
  - (REPLACE SAN LAT) (WATER LAT UNKNOWN)
  - (REPLACE WATER AND SAN LAT)
  - (REPLACE WATER LAT)
  - (REPLACE WATER LAT) (SAN LAT UNKNOWN)
  - (SAN LAT UNKNOWN)
  - (SAN LAT UNKNOWN) (WATER LAT UNKNOWN)

- SIMP\_Repair\_Areas
- 2024, MQ24-101, Curb Repair
  - 1-1/2 Inch Mill Area
  - swManhole
  - swInlet
  - Storm Gravity Mains
  - Sanitary Sewer Manholes
  - Sewer Lateral Lines
  - Sewer Gravity Mains
  - FireHydrants
  - WaterShutOff
  - WaterGateValves
  - Water Lateral Lines
  - WaterMains
- Street Curb
- C2
  - C4
  - C6
  - D2
  - F2
  - F2 MODIFIED
  - GRAVEL SHOULDER
  - NO CURB
  - STRAIGHT
  - Parcels



  
  
 12-16-2023  
 City of Marquette  
 Engineering Department  
 Geographic Information Systems (GIS)  
 1 inch = 40 feet